

# Attitudes of Serbian citizens towards EU integrations Public opinion poll

October 2015



TNS Medium Gallup

Report prepared for Delegation of EU to Serbia

©TNS 2015

# Methodology - Quantitative survey (October 2015)

## Survey scope

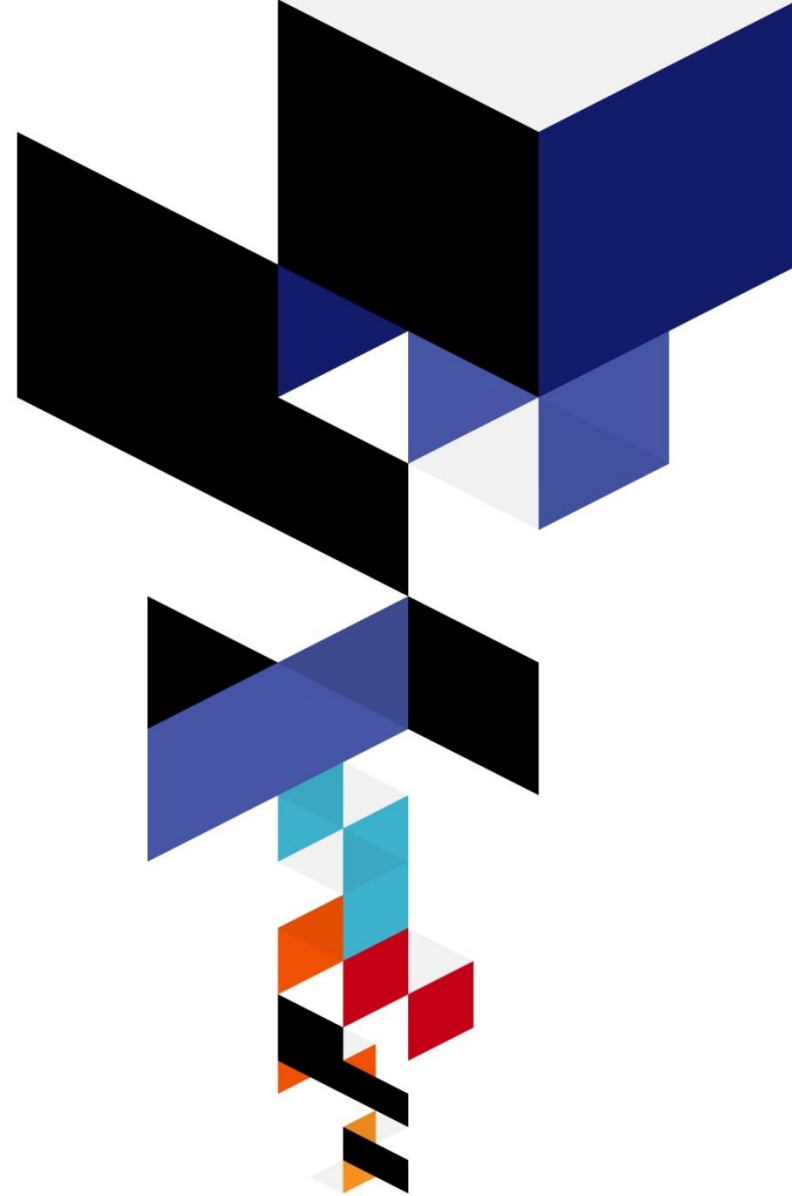
- Second wave in 2015 was conducted from **1<sup>st</sup> – 7<sup>th</sup> October.**
- National representative sample of a **1247 respondents**, adult (18+) voting population of Serbia, urban and rural areas
- The questionnaire was administered by a trained pollster, through a face to face interview (F2F); data were collected through Tablet Interview (TAPI).
- Data is weighted by age and education
- Standard error of measurement: +/-2.78%

## Explored topics

- General attitudes towards the EU
- Attitudes towards Serbia's membership in the EU
- Knowledge and Sources of information about the EU
- Expected changes after accession
- Knowledge of the EU Funds and Programmes
- Public opinion on Refugee Crisis **New**

# 1

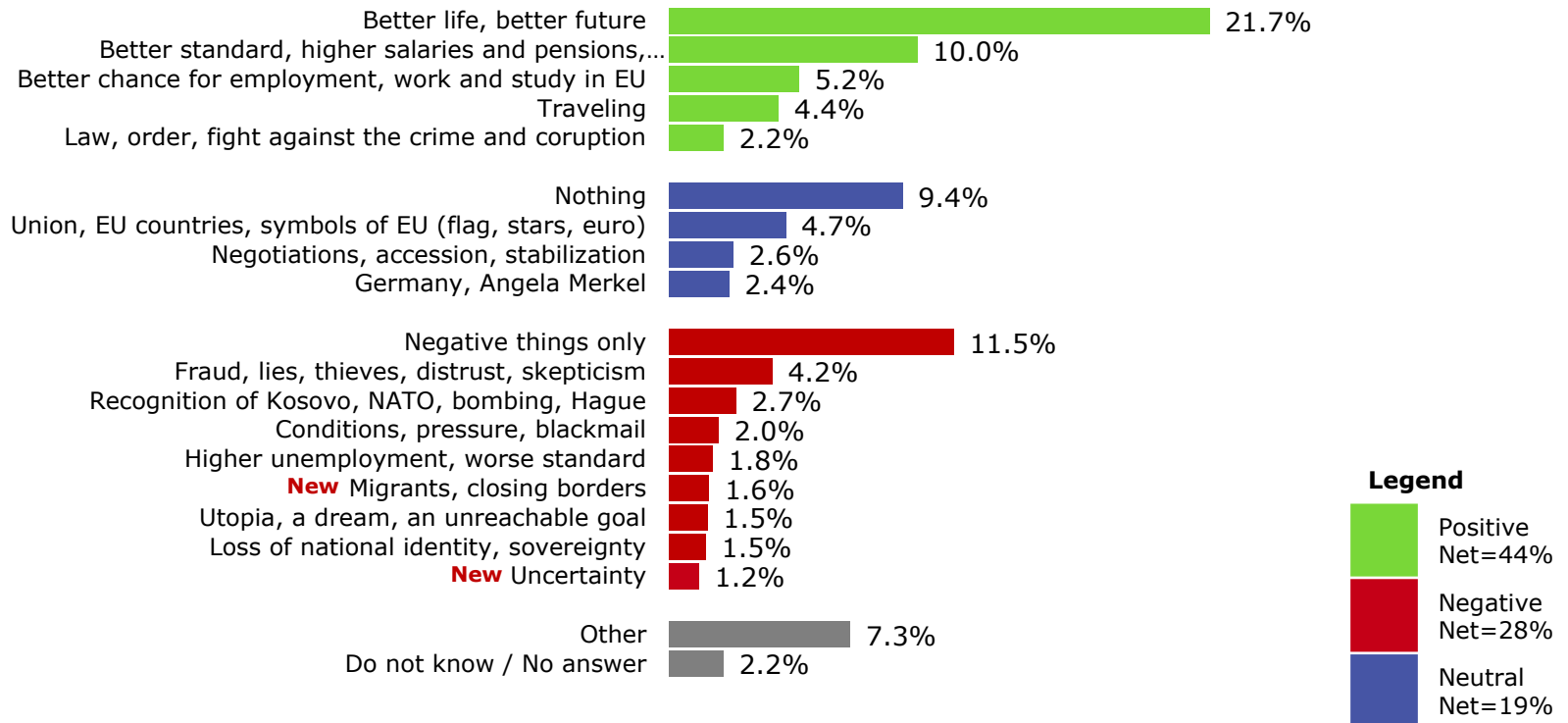
## Serbian perception and attitudes towards the EU



# Reasons behind feelings towards EU

Hopes for positive changes dominate – expectations of better life and future.

## What is your first association when someone mentions European Union? OPEN ANSWERS

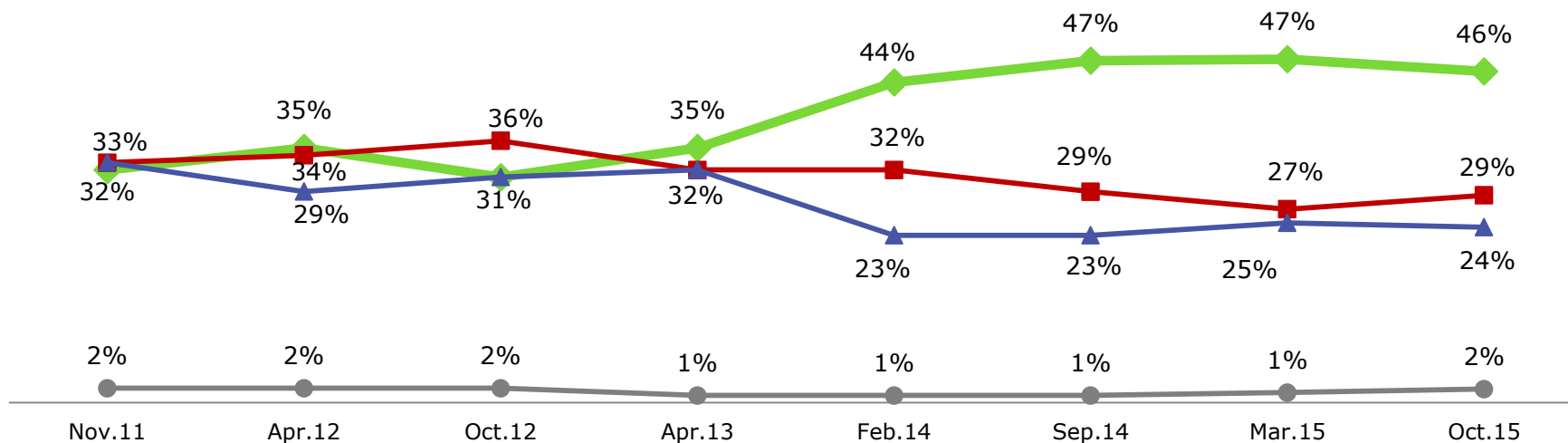


# General feelings about the EU - Trend

In comparison with March 2015, there are no significant changes in feelings towards the EU. Positive associations prevail.

**What is your general feeling about European Union? TREND**

Positive Negative Neutral Don't know/no answer



Wave	Nov.11	Apr.12	Oct.12	Apr.13	Feb.14	Sep.14	Mar.15	Oct.15
Base	1211	1214	1208	1234	1239	1241	1256	1247



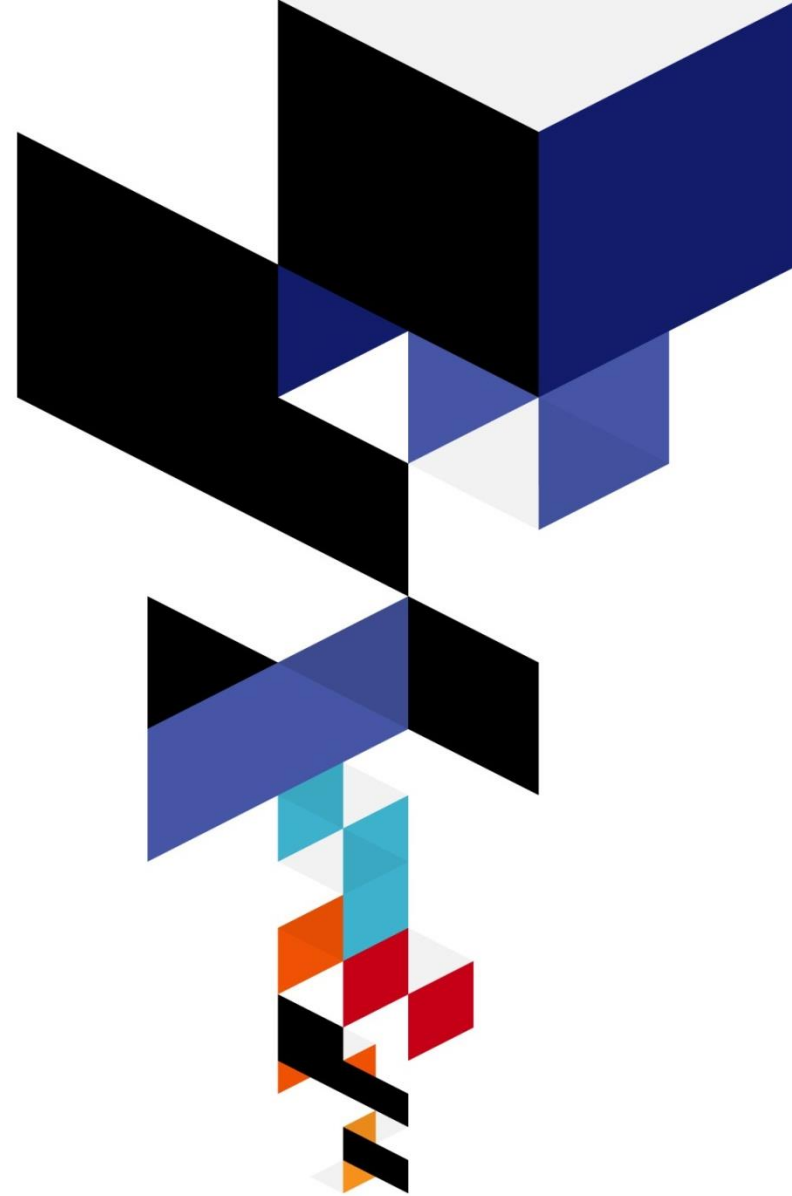
TNS Medium Gallup

Report prepared for Delegation of EU to Serbia

©TNS 2015

# 2

## Attitudes towards Serbia's membership in the EU



# Support of Serbia's membership in the EU

Majority (59%) support accession - mostly for economy reasons. Together with fear of poverty, loss of sovereignty, exploitation of Serbian resources, conditions and pressures are on the top of the list of reasons against the accession.

Generally speaking, do you personally support or don't support Serbia's integration into the EU?

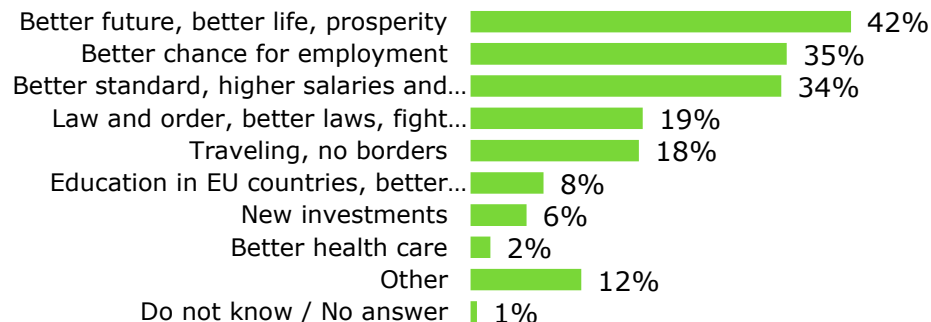


**59%**  
FOR SUPPORT

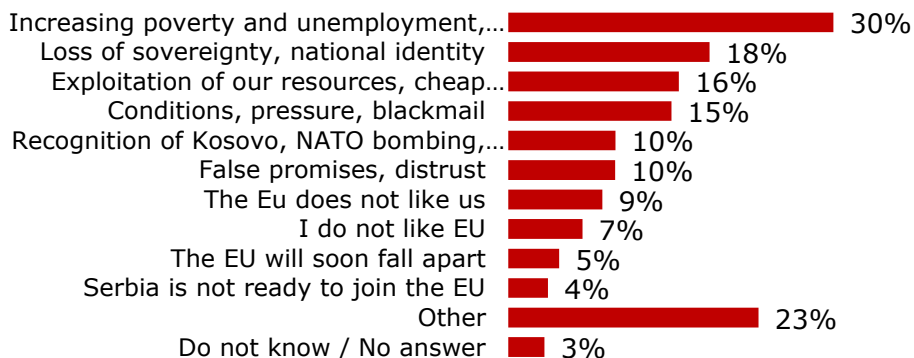


**36%**  
AGAINST SUPPORT

## Reasons FOR support. OPEN. MAX 3 Answers. % of Cases (Supporters N=740)



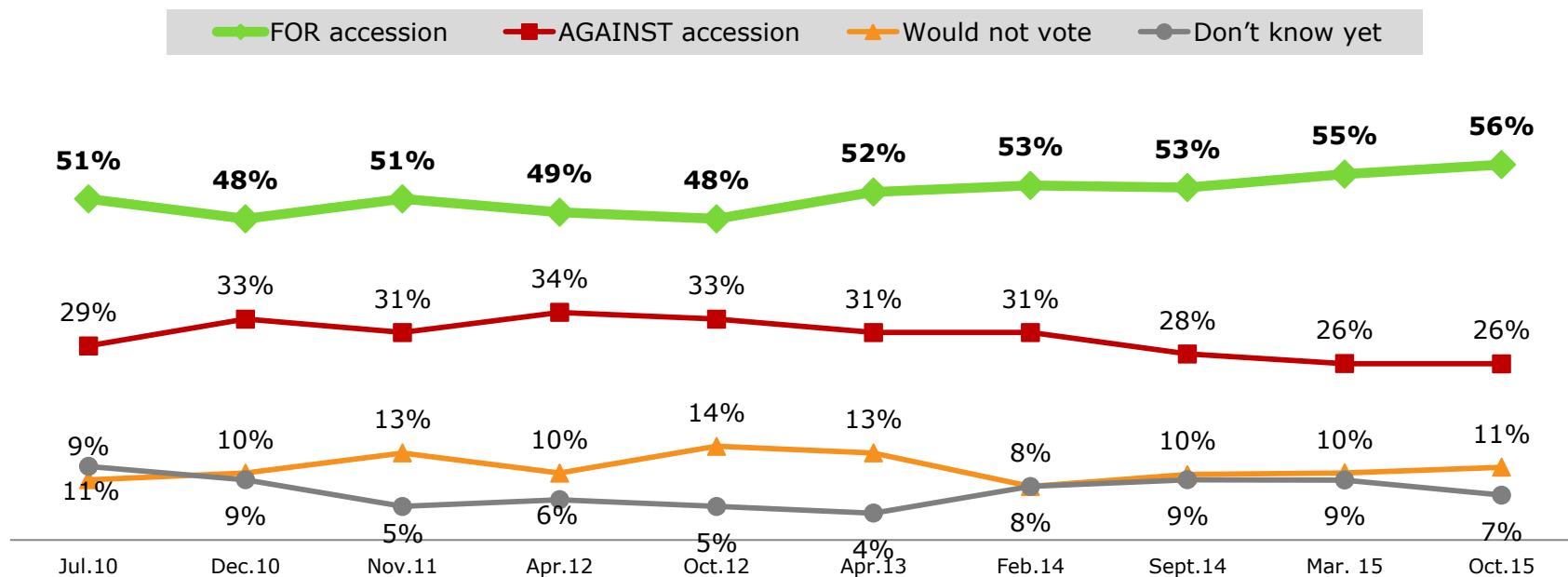
## Top 10 Reasons AGAINST support. OPEN. MAX 3 Answers. % of Cases (Opponents N=448)



# The Referendum about joining the EU - Trend

**Stable trend with no significant differences compared to March 2015 – high readiness to vote (70%), with 56% of total Serbian population support. However, the number of supporters of accession is increasing over the years.**

**How would you vote on the referendum for Serbia's accession to the EU?**



Wave	Jul.10	Dec.10	Nov.11	Apr.12	Oct.12	Apr. 13	Feb.14	Sep.14	Mar. 15	Oct.15
Base	1205	1206	1211	1214	1208	1234	1239	1241	1256	1247



TNS Medium Gallup

Report prepared for Delegation of EU to Serbia

©TNS 2015



# Conditions for accession into the EU - Trend

**Recognition of Kosovo's\* independence is still perceived as the main condition for Serbia's accession. Expectations that EU will set new conditions are decreasing compared to the previous wave. In this wave, care of refugees was mentioned as a new condition.**

## The most important conditions OPEN ANSWERS. MAX. 3 ANSWERS. % of Cases

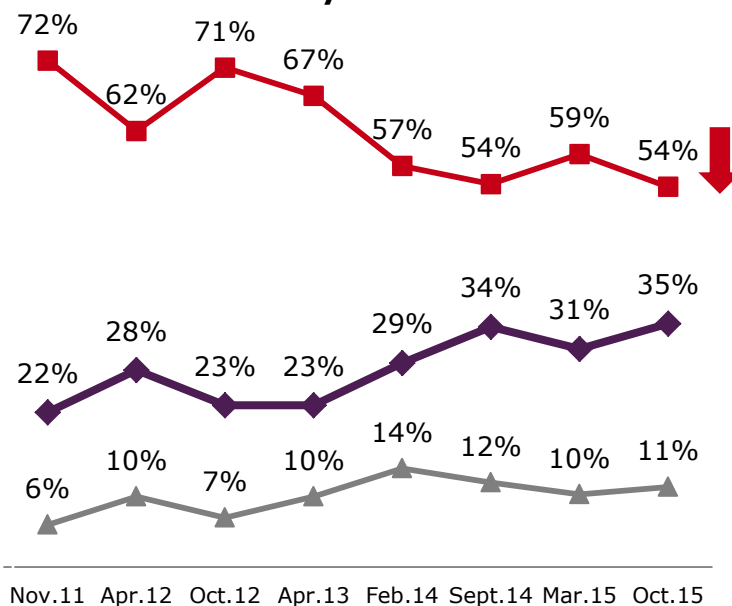


The EU will set new conditions

The EU will not set any new conditions

Don't know/no answer

## Which of the following opinions is closer to your own?

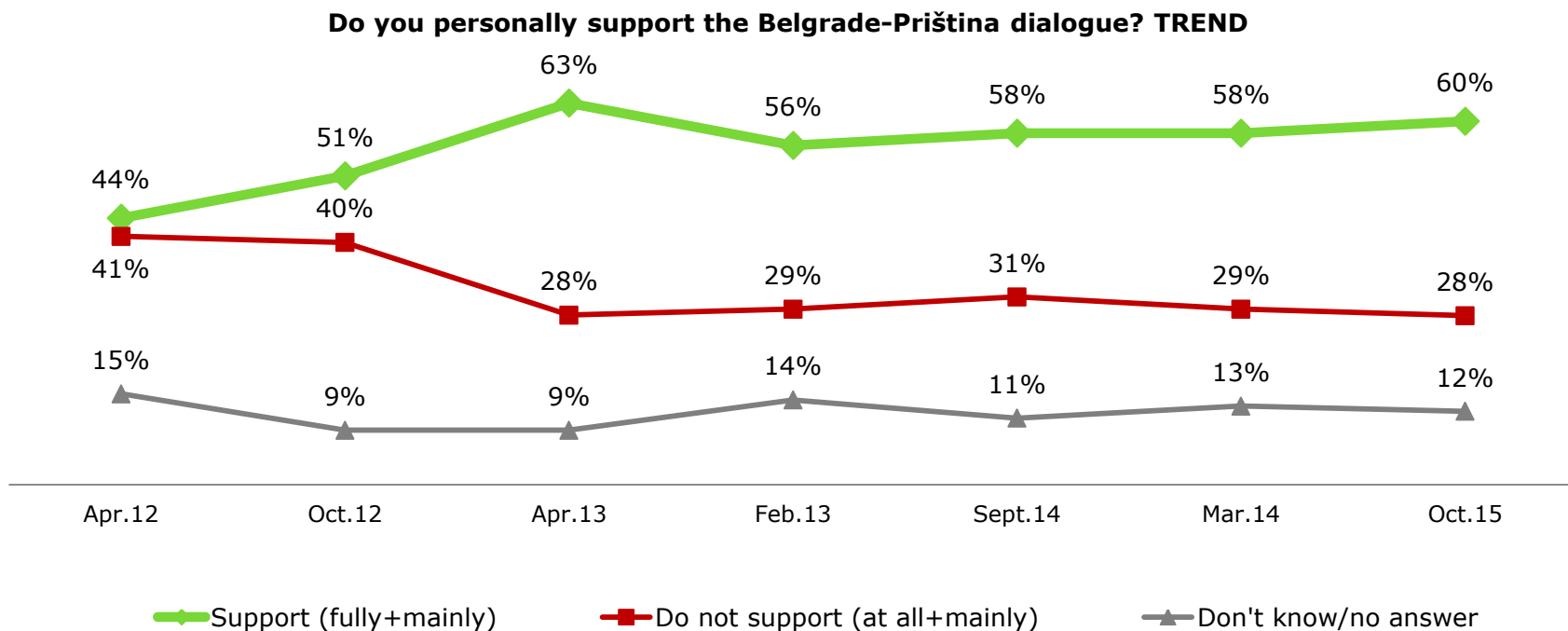


\*This designation is without prejudice to positions on status, and is in line with UNSCR 1244 and the ICJ Opinion on the Kosovo Declaration of Independence.

Wave	Nov.11	Apr.12	Oct.12	Apr.13	Feb.14	Sept.14	Mar.15	Oct.15
Base	1211	1214	1208	1234	1239	1214	1256	1247

# Support of Belgrade-Priština dialogue

Majority (60%) supports the Belgrade-Priština dialogue.



Wave	Apr.12	Oct.12	Apr.13	Feb.14	Sept.14	Mar.15	Oct.15
Base	1214	1208	1234	1239	1241	1256	1247



TNS Medium Gallup

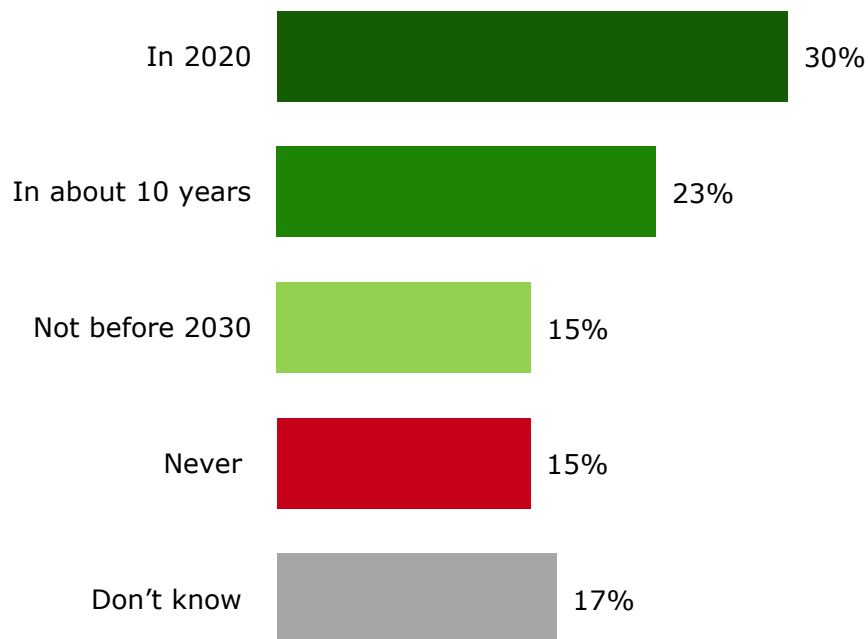
Report prepared for Delegation of EU to Serbia

©TNS 2015

# When will Serbia join the EU?

**Majority (53%) believe that Serbia will join the EU in next 5-10 years. The percentage of people who have serious doubts about Serbia's accession to EU hasn't changed compared to March 2015 (14%).**

**When do you think Serbia will join the EU?**



Younger, more educated, supporters of Serbia's integration into the EU.



Older, lower educated people, and those with lower incomes, opponents to Serbia's integration into the EU.

# 3

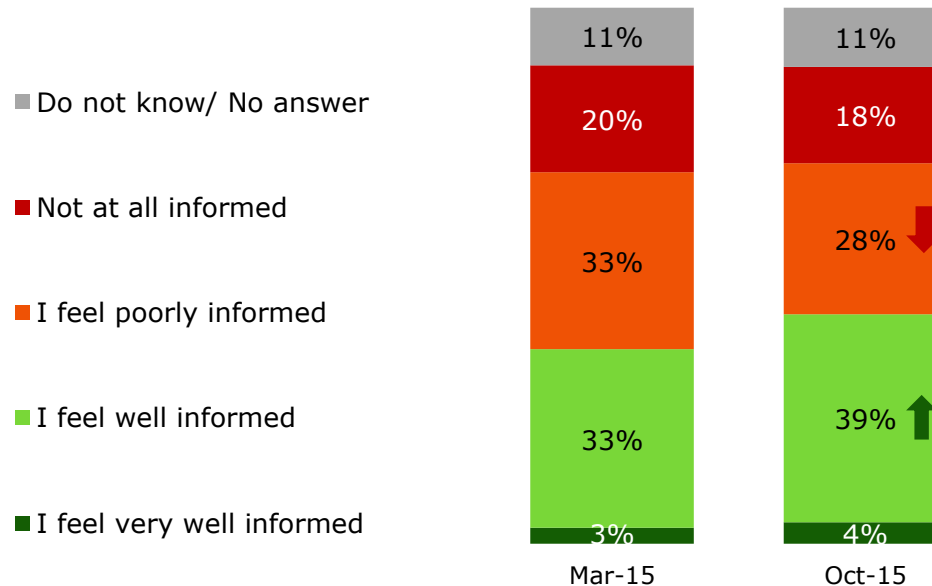
## Knowledge of the EU Funding and Programs



# The level of information about the EU

**About 46% of citizens feel insufficiently informed about the EU – the main reasons are lack of interest, insufficient information and lack of time. Still, the number of well informed is increasing, compared to previous wave.**

**In general, do you feel you are sufficiently informed about the way the EU works and advantages and disadvantages of EU membership, or do you feel you lack information?**

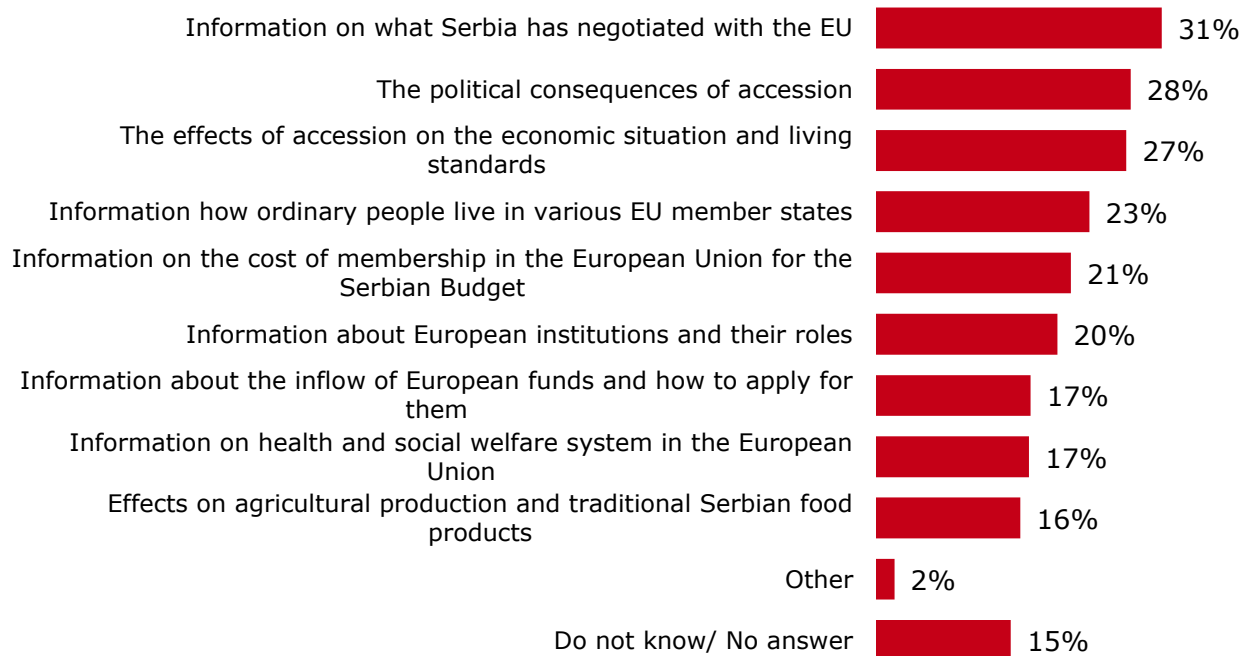


Wave	Mar.15	Oct.15
Base	1256	1247

# Most needed information about EU

**Serbian citizens would like to know more about the negotiating process, political consequences of accession and the effects of accession on economic situation and living standard.**

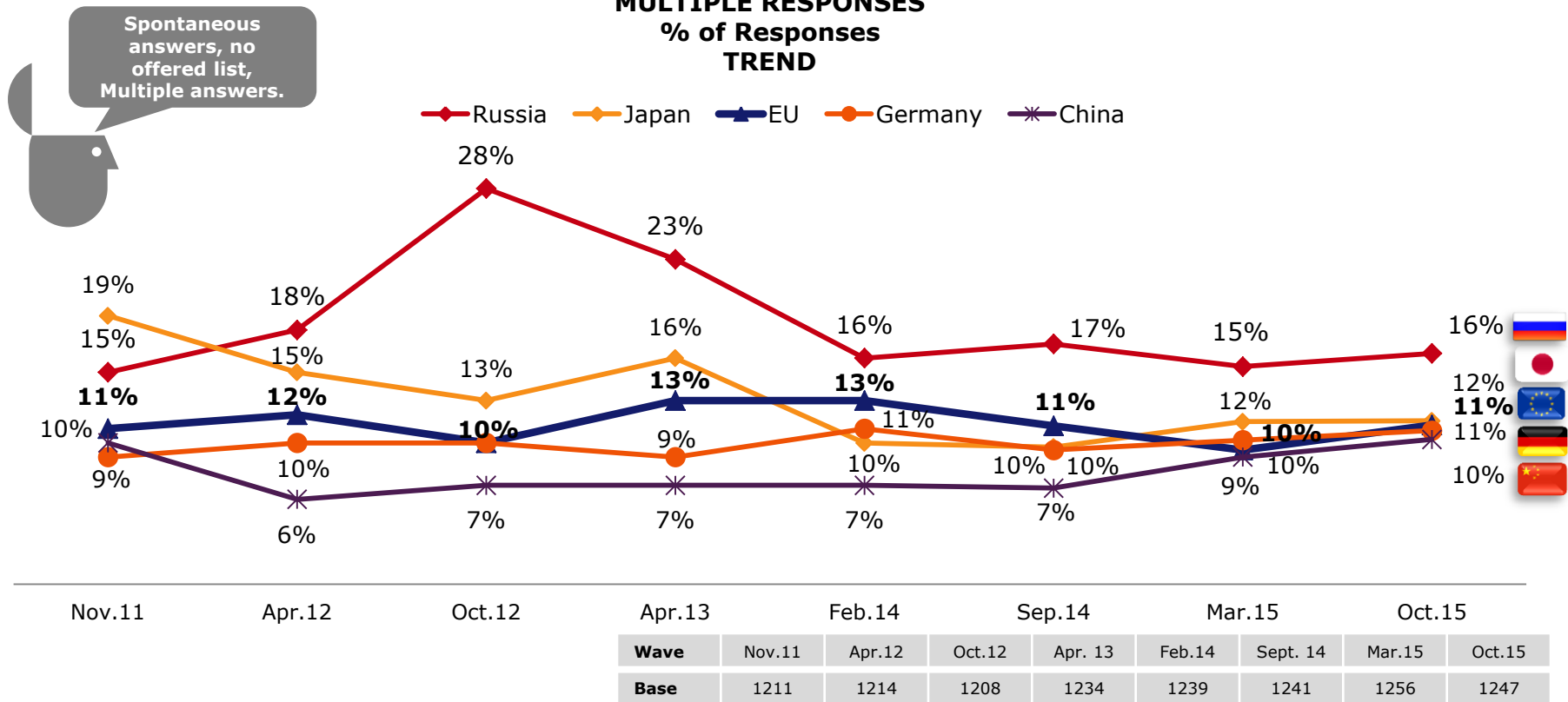
**Mark three areas where you would need more information on Serbian accession to the EU?  
MAX 3 ANSWERS! % of Cases**



# Donors to Serbia – Spontaneous awareness Trend

No significant differences in key donors' perception compared to March 2015.

Spontaneous donors awareness  
MULTIPLE RESPONSES  
% of Responses  
TREND



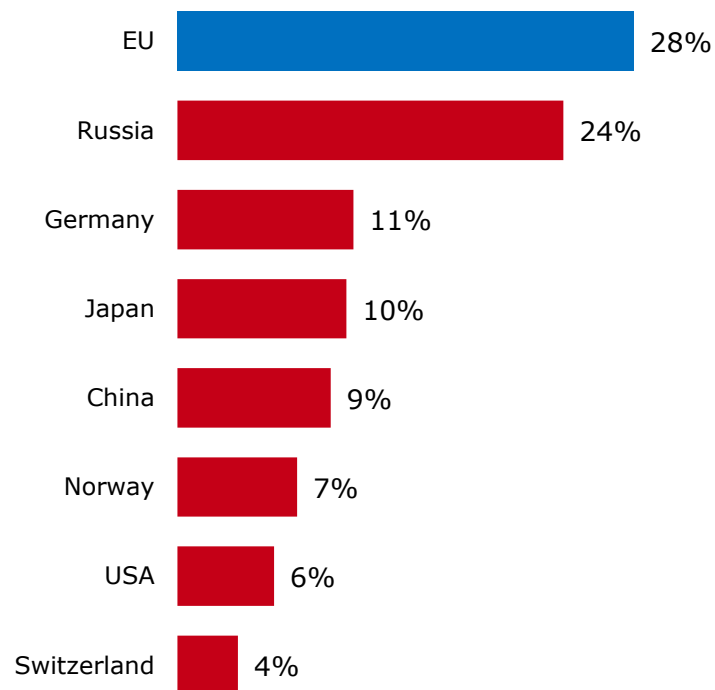
# The largest donors to Serbia – Prompted answers

The EU and Russia are perceived as the largest donors to Serbia in October 2015.

Please look at the following list. In your opinion, who on the list is the largest donor to Serbia?

**SINGLE ANSWER**

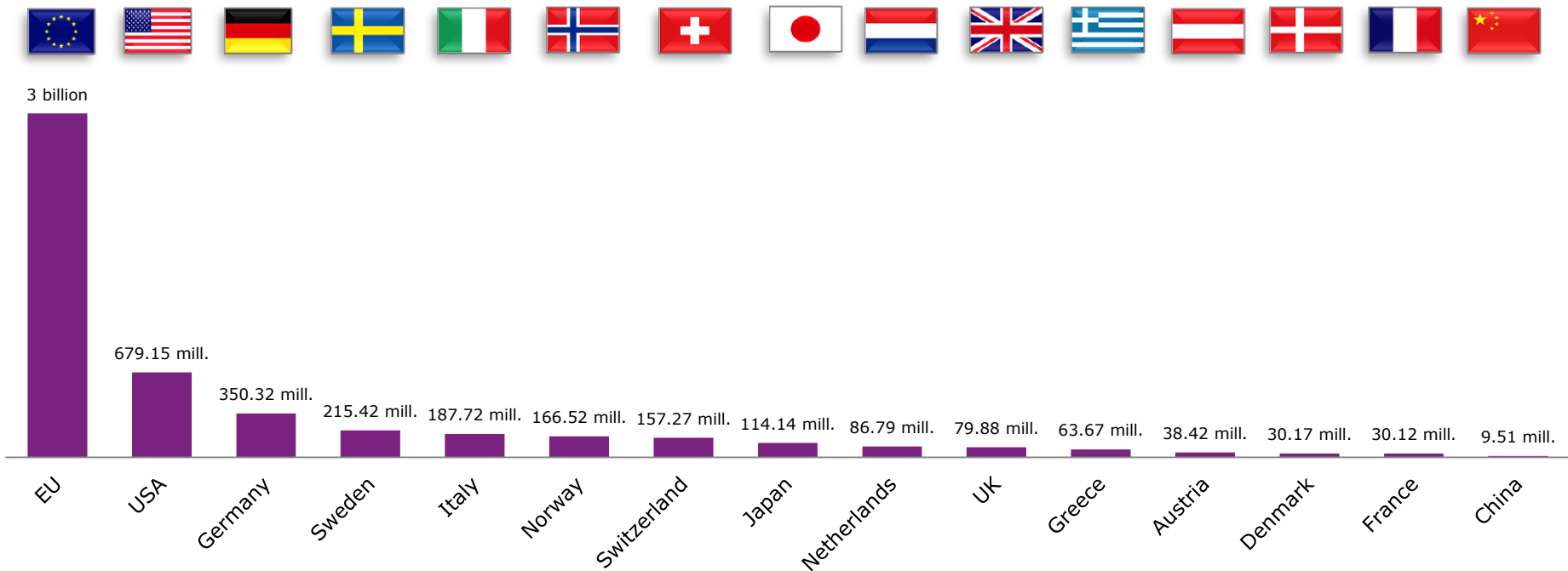
Offered list,  
Single answer





# Donations to Serbia in the period 2000-2015

## Committed grants for Serbia in period 2000-2015, amounts in millions €



- Source: EU Delegation and ISDAICON IS, November 2015. ISDAICON system includes available data for the estimated aid in-flow in the period 2000- 2015.
- Data is provided by development partners. Total amounts relate to estimated grant assistance of selected development partners, not all active donors in Serbia
- No data on Russian donations is available in ISDAICON.
- Estimated aid in-flow does not refer to financial disbursement but estimated value of grants provided in services, goods, works and financial resources

# Awareness about donations and programmes

**Majority of citizens haven't heard about any EU programme/donation to Serbia. Stable awareness (25%) is mostly related to donations for taking care of refugees and help after the floods in May 2014.**

**Have you recently heard about any EU financial support/programme - donation to Serbia?**



**No**  
**69%**

Diff. with  
w1 '15.

(+2)



**Citizens from CW and SE, more educated people & EU supporters.**

**Yes**  
**25%**

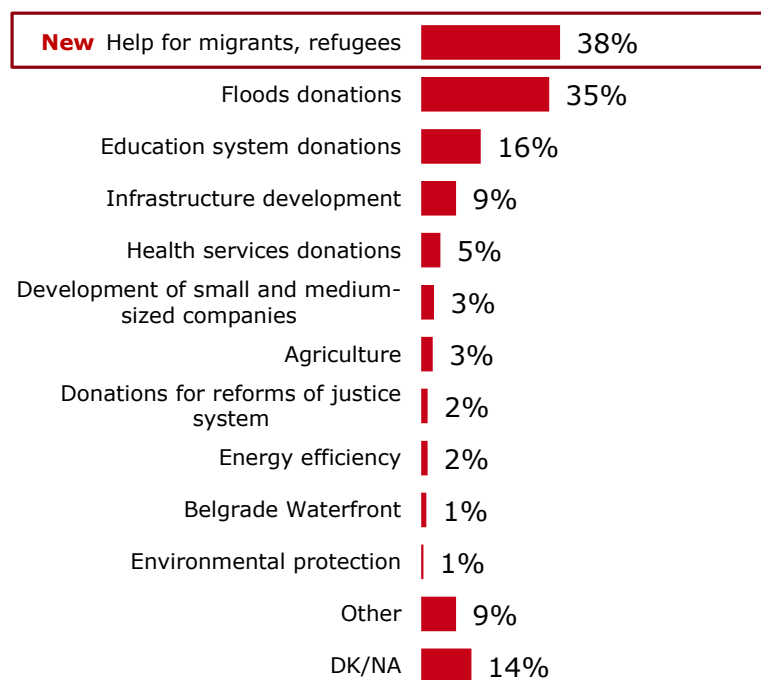
(+1)



**Don't know**  
**6%**

(-3)

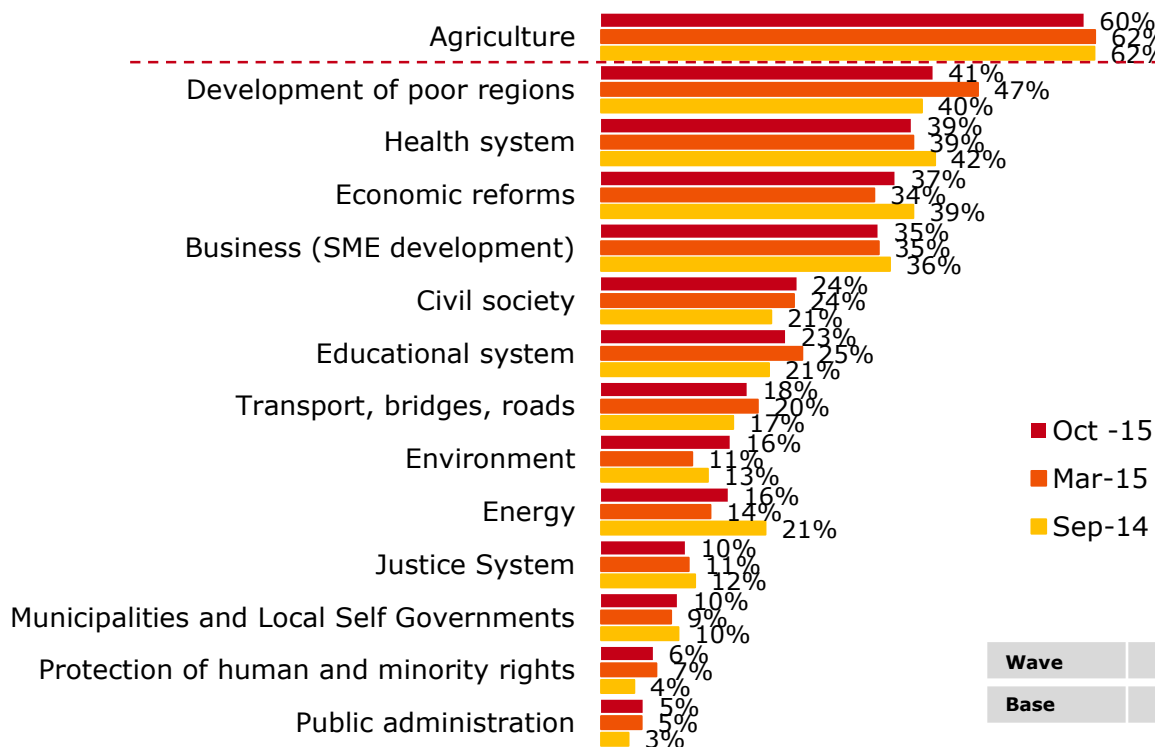
**Those who heard: Which EU donation have you heard about? OPEN ANSWERS. MAX 3 ANSWERS. % of Cases**



# EU assistance priorities (WISH LIST)

According to Serbian public opinion, agriculture is still the priority sector for EU financial assistance, followed by development of poor regions, health system, economic reforms and SME development.

Which sectors do you think EU assistance should go to? **MULTIPLE ANSWERS.**  
% of Cases



Wave	Sept.14	Mar.15	Oct.15
Base	1241	1256	1247

# Thank you

**Sladana Brakus**

[Sladjana.brakus@tnsmediumgallup.co.rs](mailto:Sladjana.brakus@tnsmediumgallup.co.rs)

+381 11 3613 230

+381 64 1419260

**Milana Aleksić**

[Milana.Aleksic@tnsmediumgallup.co.rs](mailto:Milana.Aleksic@tnsmediumgallup.co.rs)

+381 11 3613 230

+381 64 1626478

**Bojana Jevtić**

[Bojana.jevtic@tnsmediumgallup.co.rs](mailto:Bojana.jevtic@tnsmediumgallup.co.rs)

+381 11 3613 220

+381 63 386765

TNS Medium Gallup | Savski trg 9, Belgrade, Serbia | + 381 11 3613 220 | [www.tnsmediumgallup.co.rs](http://www.tnsmediumgallup.co.rs)



**TNS Medium Gallup**

Report prepared for Delegation of EU to Serbia

©TNS 2015