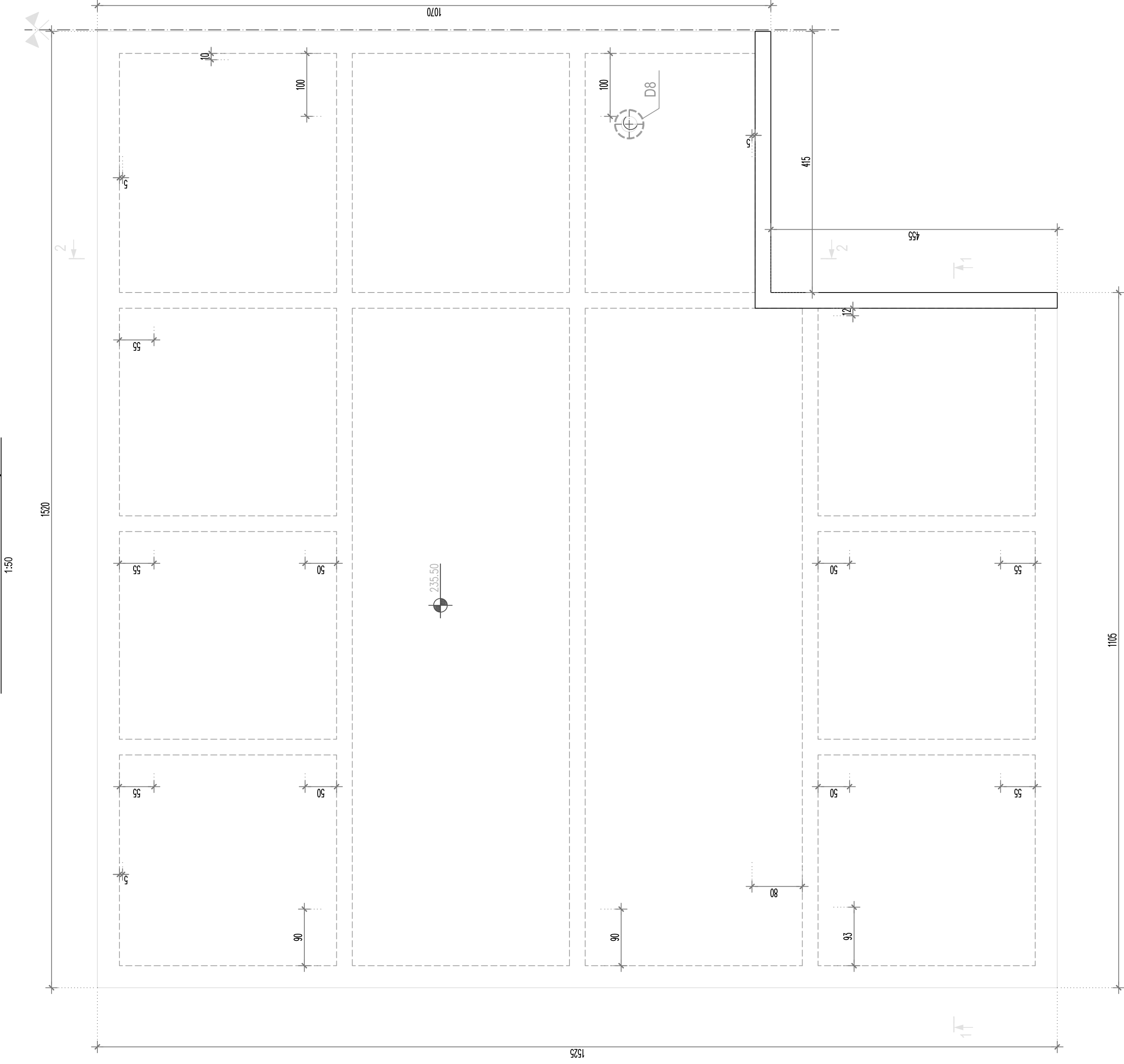
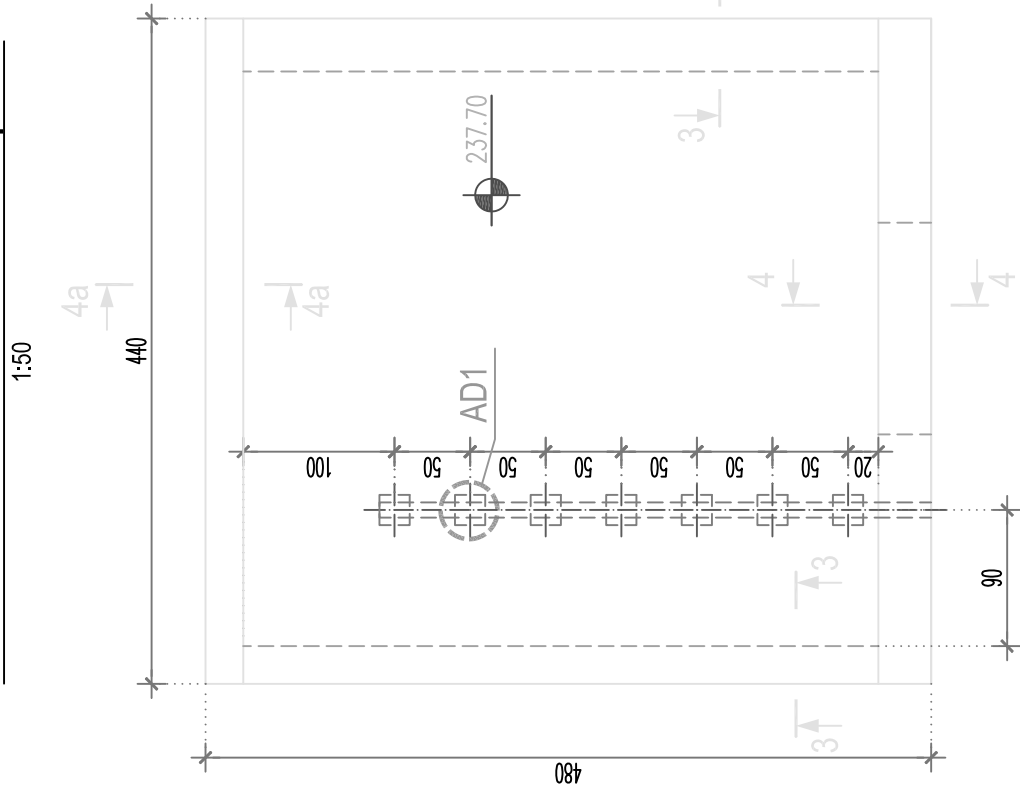


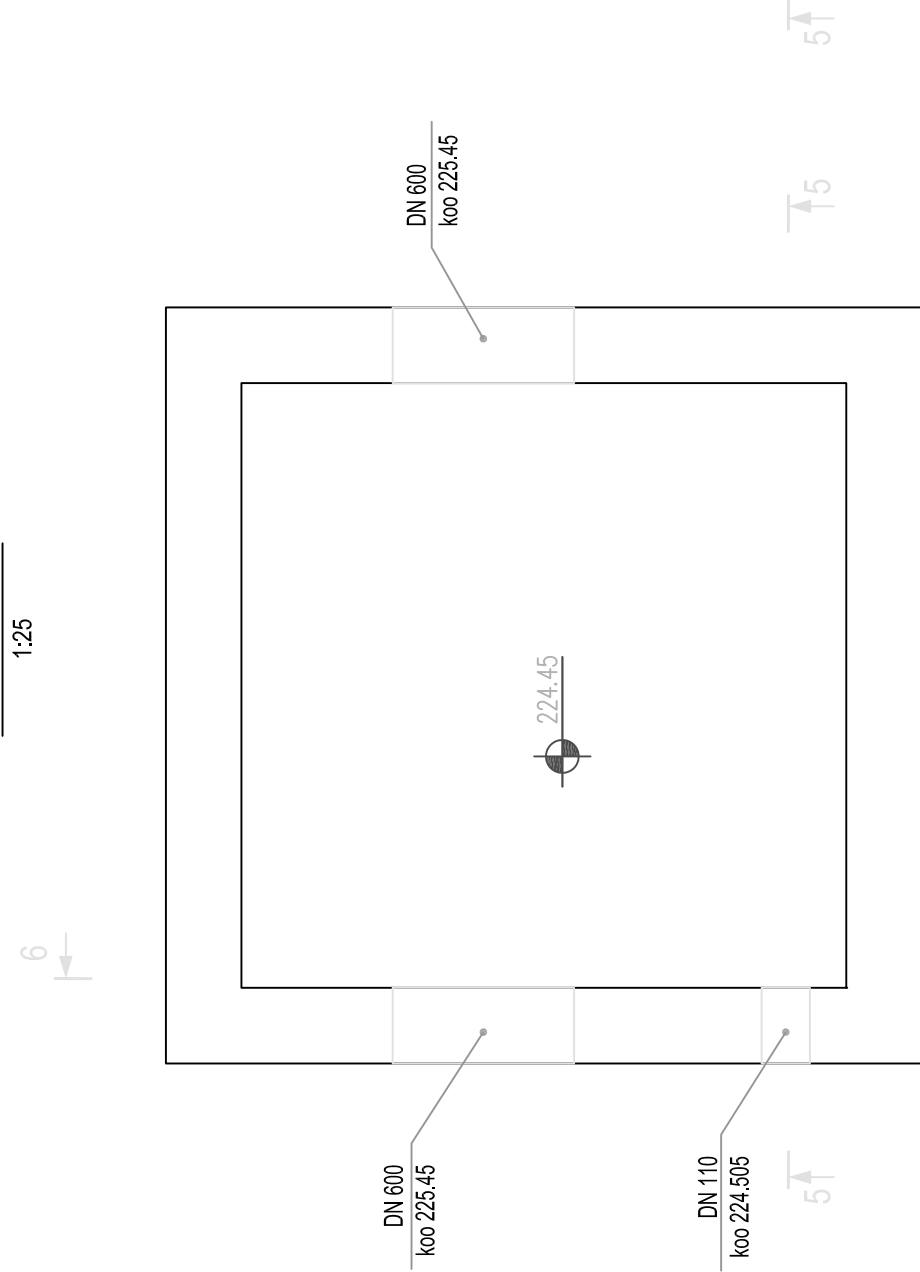
Pos 2 - Reinforcement plan



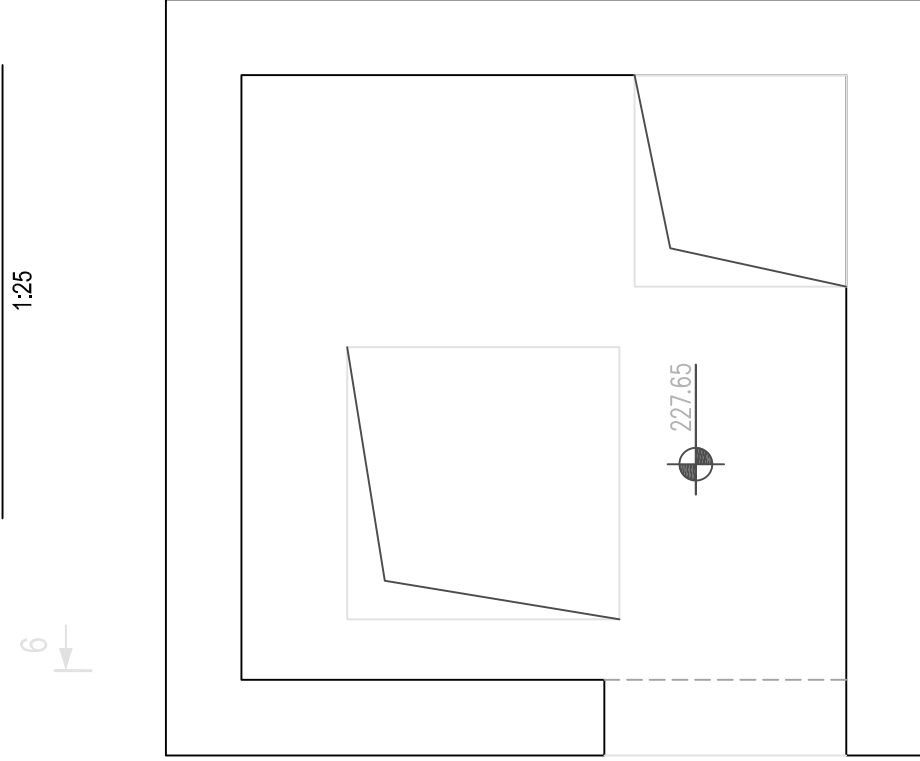
Pos 3b - Reinforcement plan



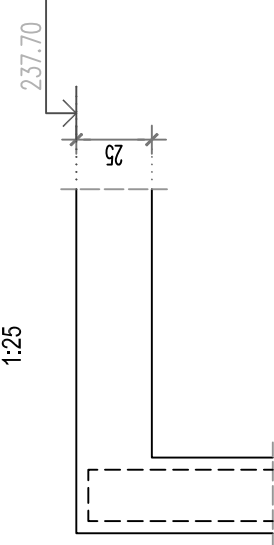
Base Slab



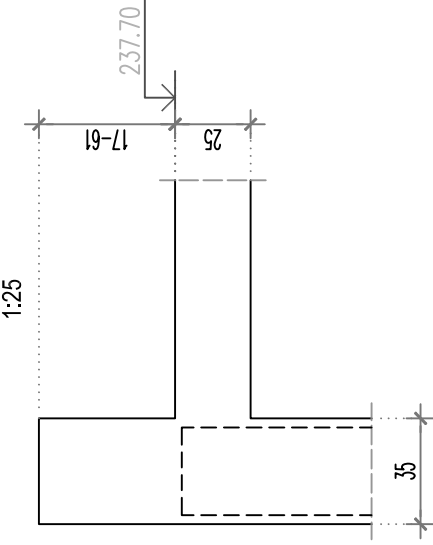
Slab at elevation 227.65



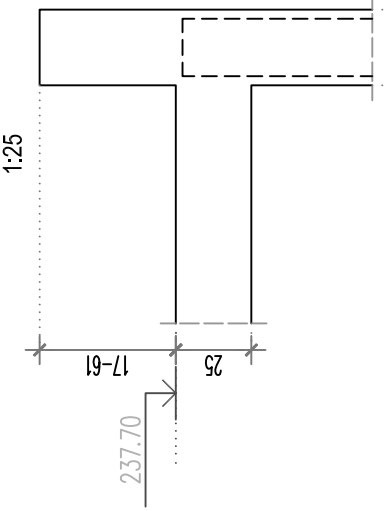
3-3



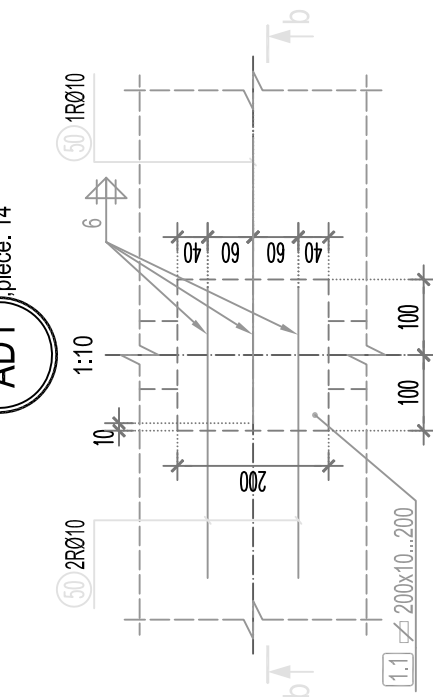
4-4



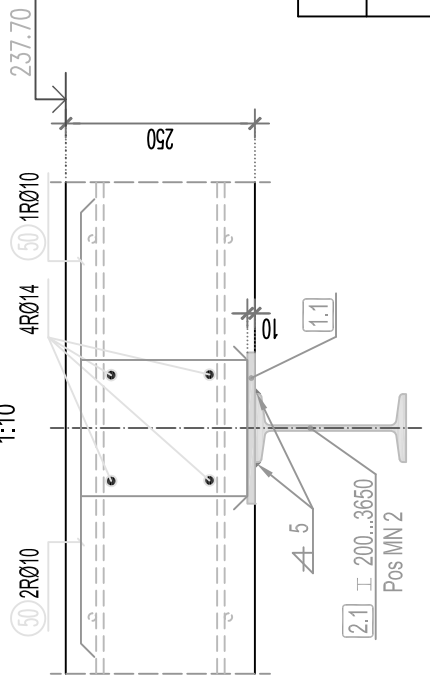
4a-4a



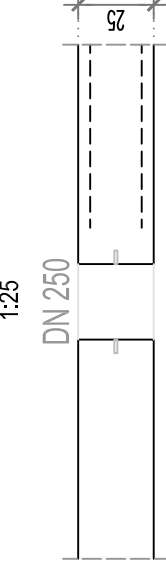
AD1



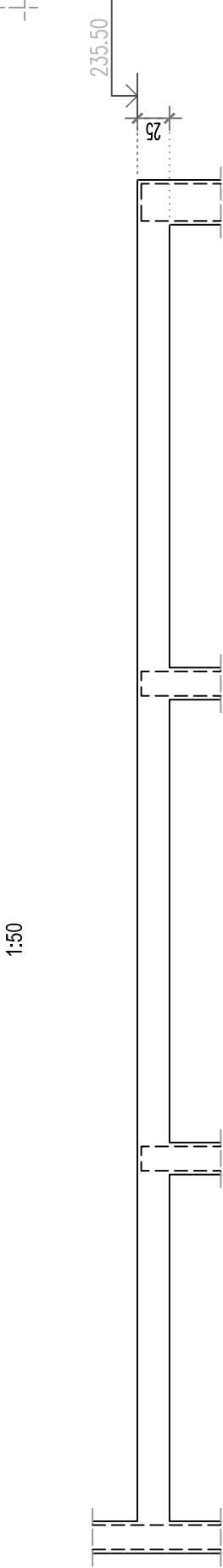
b-b



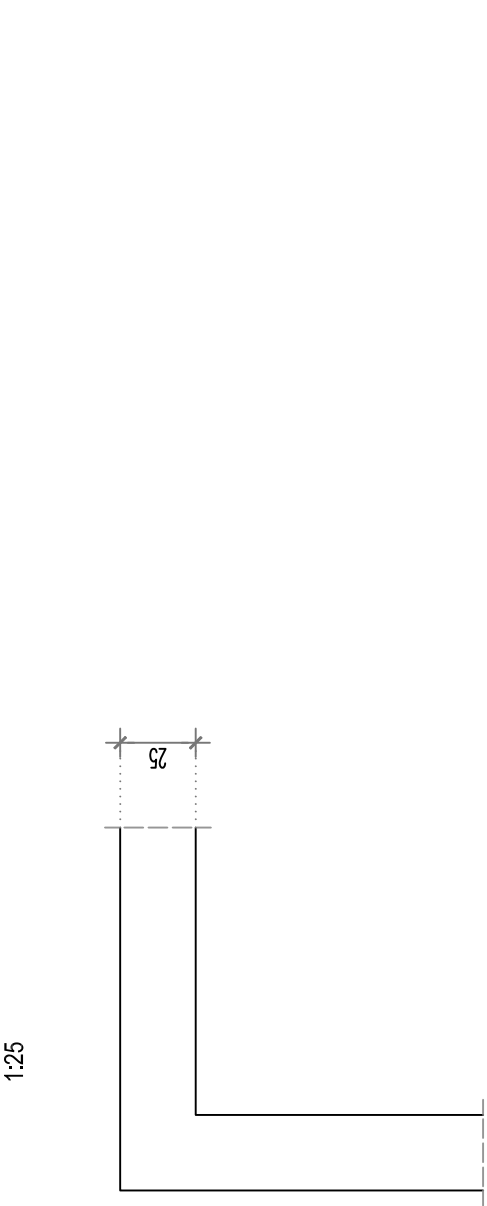
a-a



2-2



7-7



Reinforcement specification - Detail AD 1				
POS	MATERIAL	PIECE	DIMENSION (LENGTH) mm	TOTAL WEIGHT (kg)
1.1 #200x(0..200	S235	14	200	3.20 kg/piece
2.1 # 200...3650	S235	2	3650	95.63 kg/piece
50 R2010	R400/500	42	750	0.633 kg/m²
Total:				256.00

MATERIAL: Concrete MB 30, V6  
Reinforcement RA2 400/50

NOTE:

- Cover to reinforcement 3 cm.
- Reinforcement of Chamber1 is mirror image to Chamber2
- Center of the openings and pipe dimensions are marked on the drawing. Details, installation method and correct opening dimensions see in the mechanical work part.

