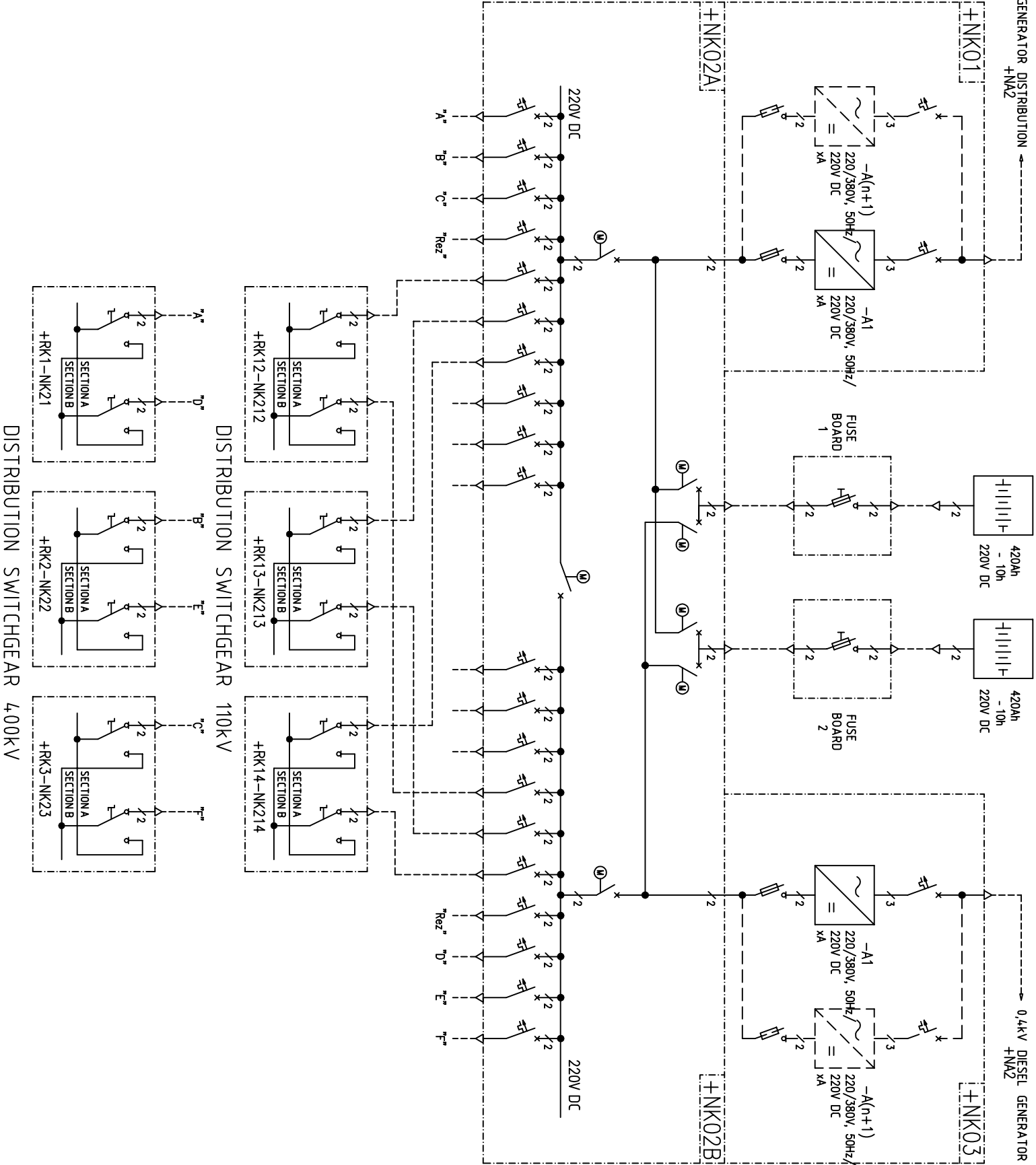


NOTE: PRELIMINARY DRAWING
FOR TENDER PURPOSES ONLY



PROJECT :

epi'sa

Supply of equipment and materials for Construction of substations 400/110 kV

EMC ELEKTROMRETS SRBIJE

DELEGATION OF THE E TO THE REPUBLIC

TO THE REPUBLIC
OF SERBIA

3						
2						
1	14/06/11	Engineer	Engineer	-	Draft drawing to be commented by Beneficiary/Contracting Authority	
REVISION	DATE	DRAWN	CHECKED	APPROVED	REASON FOR REVISION	
SCALE:		DRAWING CODE:				
		AS-1				
DATE:		14/06/11	TITLE :		DC SWITCH BOARD 220V DC - SS VRANJE 4	
DRAWN	CHECKED	APPROVED			DC Auxiliary Services Panels	
Engineer	Engineer	-				
			PAGE:		5	
			NEXT PAGE:		-	
			REV :		1	
			DIN :		A3	