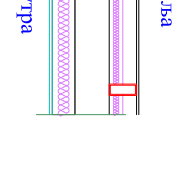
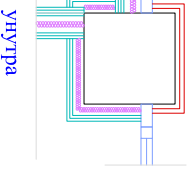
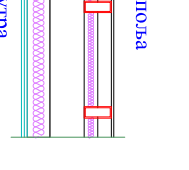
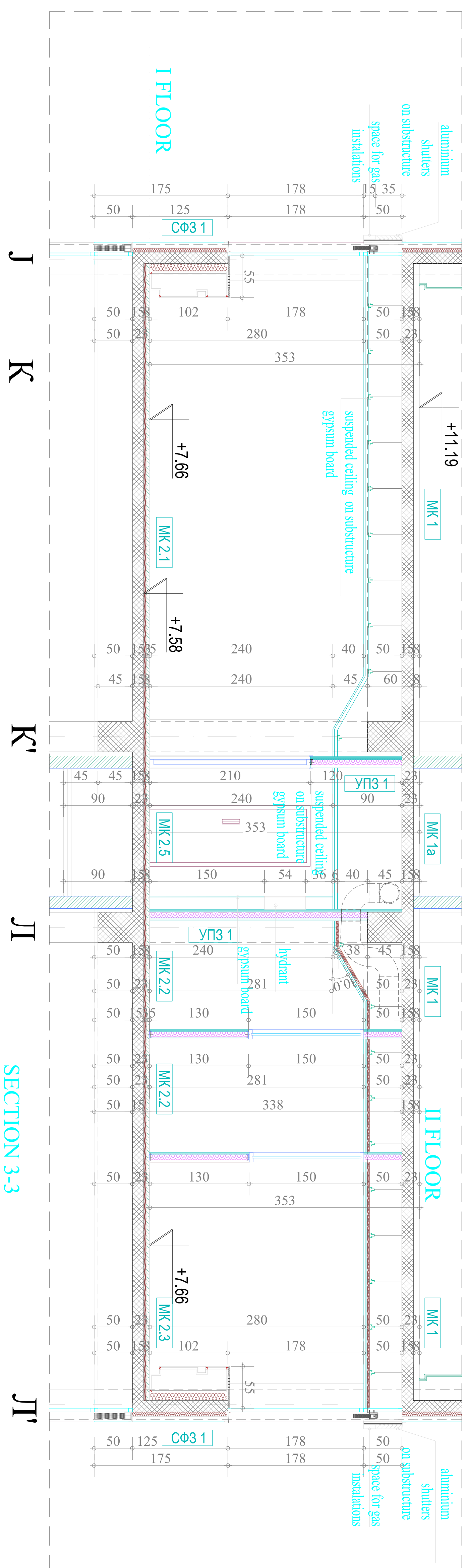


C03 - FACADE WALL	
<p><b>C03 i</b></p> 	<ul style="list-style-type: none"> <li>- facade panel "littorino" ~ 13cm (pannello glass on substructure) - parapet (reinforced concrete) ~ 15cm</li> <li>- thermal insulation (semihard boards of rock wool 60-20kg/m<sup>3</sup>) - 10cm</li> <li>- gypsum board on substructure 125cm</li> </ul>
<p><b>C03 2</b></p> 	<ul style="list-style-type: none"> <li>- facade panel "littorino" ~ 40cm</li> <li>- reinforced concrete column ~ 40/40cm</li> <li>- thermal insulation (semihard boards of rock wool 60-20kg/m<sup>3</sup>) - 5cm</li> <li>- double gypsum board on substructure 2.5cm</li> <li>- finishing - 1cm</li> <li>- 1st dispersion</li> <li>- 2nd ad resistant ceramic tiles on glue</li> <li>- 3) ceramic tiles on glue</li> </ul>
<p><b>C03 3</b></p> 	<ul style="list-style-type: none"> <li>- facade panel "littorino" ~ 13cm</li> <li>- reinforced concrete wall ~ 15cm</li> <li>- thermal insulation (semihard boards of rock wool 60-20kg/m<sup>3</sup>) - 10cm</li> <li>- double gypsum board on substructure 2.5cm</li> <li>- finishing - 1cm</li> <li>- 1st dispersion</li> <li>- 2nd ad resistant ceramic tiles on glue</li> <li>- 3) ceramic tiles on glue</li> </ul>



GENERAL REMARKS:

- All dimensions must be checked on site before the start of construction
- Inconsistency and exceptions in the drawings and/or relation to the condition on the object, must be resolved by the responsible architect
- The heights of the parapet are given from the finished floor level
- The heights of the windows are given from the brickwork of the parapet
- The heights of the windows are given from the brickwork of the parapet
- concrete window lintel level
- The heights of the doors are given from the finished floor level
- door lintel level